

FRESH MINT

ENGLAND | LONDON



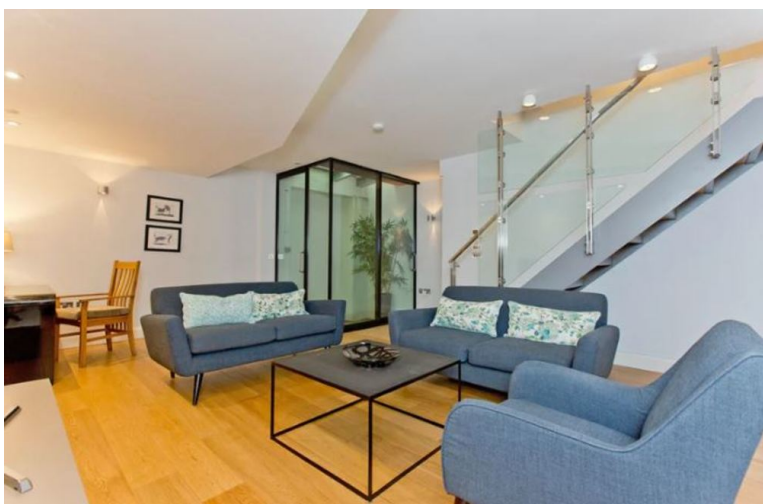
3 Bedrooms



6 Guests



POA



- › Chef service available
- › Family villa
- › Near shops/restaurants
- › With WIFI

"This Marylebone four-storey town house combines the exclusive central London location, just 10 minutes away from Oxford Circus, with the luxury of a spacious home with three en suite bedrooms, garage and a charming sunny terrace in a tranquil mews street".

2-WEEK MINIMUM RENTALS

The location provides endless opportunities to enjoy all that London has to offer within walking distance: shops, fashion boutiques, cafes, trendy restaurants, pubs, theatre shows, art galleries and museums. Soho and Mayfair are in the neighborhood so you will always find things to do. This London town house is a peaceful haven to which guests can retreat after a busy day out shopping or sightseeing.

ACCOMMODATION

(on 4 levels connected via internal staircase):

Indoors:

Open plan, modern fully equipped kitchen/ breakfast/ dining area, door to outdoor terrace.

Stairs to mezzanine level with living area, sofa, coffee table.

Second living area, sofa, coffee table, TV.

Master bedroom: double size bed, en suite bathroom, WC, door to balcony.

Bedroom 2: double size bed, en suite bathroom, WC.

Bedroom 3: double size bed, en suite shower room, walk in shower, WC.

Guest W.C.

Outdoor:

Furnished outdoor terrace. Parking space for 1 car in the garage. Balcony/ Rooftop Terrace.

DISTANCES

Great Portland Street tube station: 8 minutes' walk.

Oxford Circus tube station: 8 minutes' walk.

Oxford Street/ Regent Street: 0.5 miles.

Soho: 0.7 miles.

The West End: 0.9 miles.

Leicester Square: 1 mile.

The British Museum: 1 mile.