

VILLA CAMPESE

TRADITIONAL & UNIQUE | TRADITIONAL FRANCE



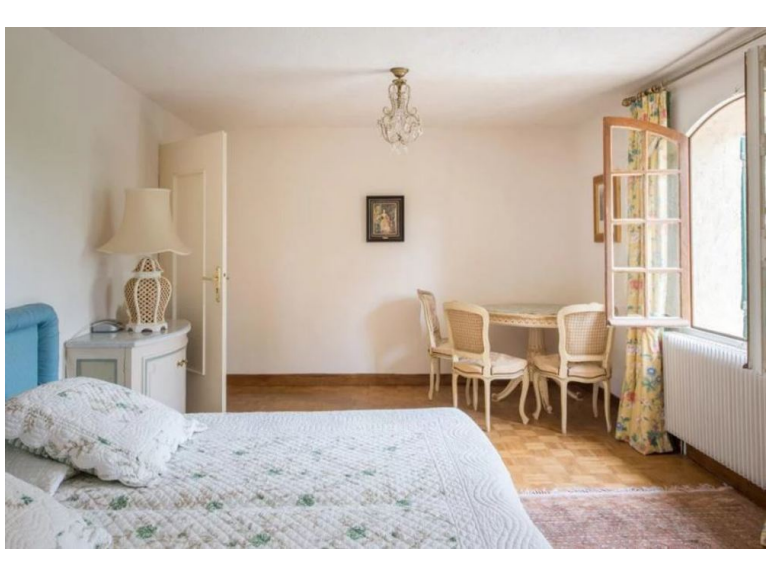
6 Bedrooms



12 Guests



POA



- › Chef service available
- › Family villa
- › Near shops/restaurants
- › Romantic villa
- › With WIFI

"Perfectly placed between Avignon, St. Remy de Provence, Arles and Nimes (only about 12 miles from each) and walking distance to the local village and restaurants."

This a spacious stone-built holiday villa in Provence with its own magnificent Roman-style colonnaded circular swimming pool. The house is superbly located, offering wonderful panoramic views of Provence and the Rhone valley. It's just 1 mile (1.5 km) out of the historic medieval town of Beaucaire with its three-lined colourful marina. There are countless restaurants, cafès, shops, supermarkets and boulangeries within walking distance.

The main villa can sleep 12 guests in its 6 double or twin bedrooms. It also boasts 5 bath/shower rooms, 5 WCs, three large reception rooms and a fully fitted kitchen.

The spectacular circular pool with and poolside terrace, its summer kitchen, barbecue, sun terrace and shaded summer lounge is a real feature of this fantastic French holiday villa and coupled with the views from the terrace, can only be described as paradise!

There is plenty to explore in this charming area of Provence, with beautiful and historic towns such as Avignon, Nimes and Arles as well as the chic and fashionable St. Remy de Provence all within a short driving distance!

Accommodation:

Main Villa Interior:

The accommodation comprises a large entrance hall and sitting room, which leads to the dining room, and through to the salon complete with TV, SKY and DVD facilities. The comprehensively equipped kitchen will leave you wanting for nothing. There are 6 double or twin bedrooms, five bathroom/shower rooms (all newly fitted) and 5 WCs.

There is also a laundry room. The villa is bright and airy with huge rooms and has Wi-Fi access.

Grounds:

Outside the circular roof terrace is accessed by internal staircase up from 1st floor landing with truly spectacular panoramic views. The terrace overlooks the gardens and the landscape. The beautiful circular swimming pool was built in the style of a Roman colonnaded arena and can be illuminated at night. The pool is over 26 feet (8m) in diameter and semi-circular steps lead down into it. The pool has a sun-terrace, a pool-side fully fitted summer kitchen and BBQ area, boules pitch and a shaded pool-side summer lounge. Please note the pool is open from May to October (inclusive).