

VILLA MILA

CROATIA | ISLAND OF BRAC



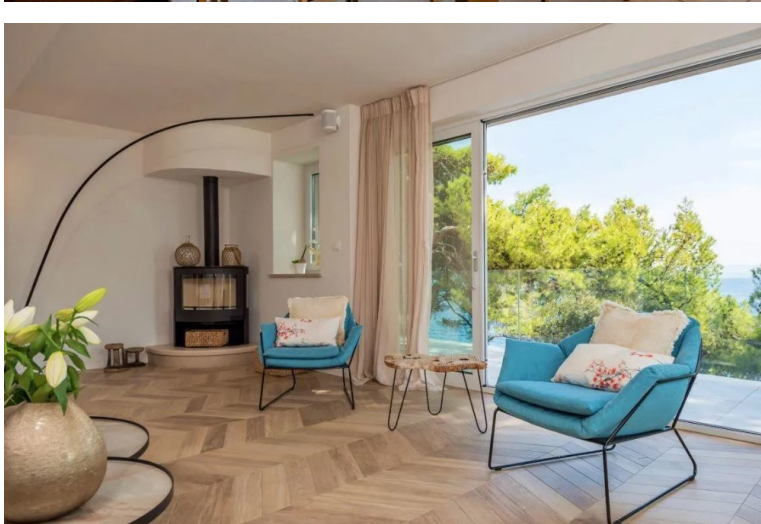
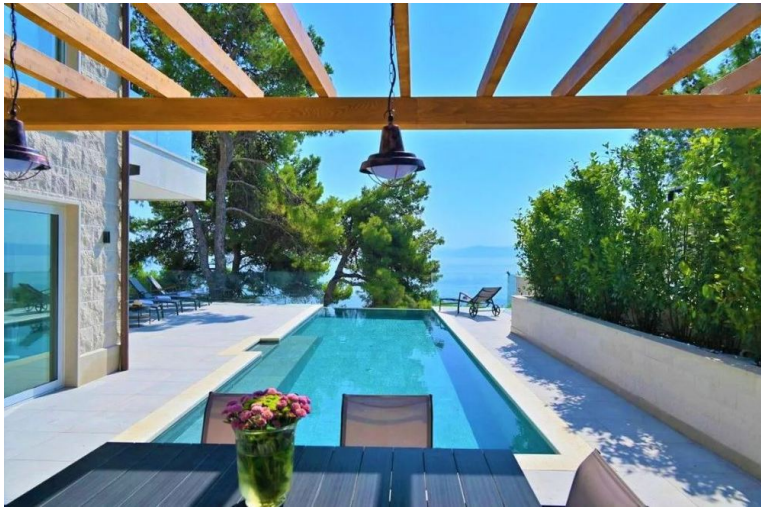
7 Bedrooms



14 Guests



£6705 - £17125 / week



- › Air Conditioning
- › Beach within 10 minute walk
- › Chef service available
- › Family villa
- › For large groups
- › Infinity Pool
- › Near shops/restaurants
- › Near the beach
- › Romantic villa
- › Table tennis
- › With seaviews
- › With WIFI

"Situated in a seafront position on the splendid Croatian island of Brac, just minutes away from the fishing harbour of Sumartin and the pretty village of Selca, this newly renovated villa with infinity pool and direct sea access platform affords marvellous views over the sea, the Biokovo mountain range and the island of Hvar".

Built using the white local stone, this property features a large terrace with pool, sun loungers, shaded dining terrace with barbecue facilities and a path leading to the private stone plateau with sunbeds. Perfect for families and groups of friends, this villa accommodates up to 14 guests in seven en suite, double bedrooms with individually controlled air-condition and underfloor heating.

ACCOMMODATION

(445 m2)

Lower ground floor:

Bedroom 1: Double bedroom, King size bed, en suite bathroom.

Laundry room.

Kitchenette.

Wine cellar.

Ground floor:

Living and dining area with seating for 12 guests, SAT TV/ DVD/ video library, stove, door to pool and sun terrace with sea views.

Fully equipped kitchen/ breakfast bar (coffee maker, dishwasher, dishes & utensils, microwave, oven, hob, and refrigerator), utility (with ironing facilities, washing machine), door to covered terrace with outdoor dining table.

Bedroom 2: Master bedroom, en suite bathroom.

Bedroom 3: Twin bedroom, en suite bathroom.

Guest WC.

First floor:

Bedroom 4: Double bedroom, King size bed, en suite bathroom.

Bedroom 5: Double bedroom, King size bed, en suite bathroom.

Bedroom 6: Double bedroom, King size bed, en suite bathroom.

Bedroom 7: Double bedroom, King size bed, en suite bathroom.

Grounds:

Private terraces grounds with open and shaded areas with lounging and dining furniture. Covered terrace with outdoor dining facilities and built in BBQ. Mediterranean gardens with scented herbs and pine trees. Private infinity edge pool (Roman steps), luxury sun loungers, sea views, path down to a private beach plateau with jetty and the sea (metal ladder). Table tennis. Private parking.

DISTANCES

Beach: 20 meters stone plateau, 200 meters pebble beach.

Town center: 2 km Sumartin & Selca.

Bol local airport: 15 km.

Split airport: 60 km.

Ferry port: 2 km Sumartin (line Makarska – Sumartin); 35 km Supetar (line Split – Supetar).

Marina: 2 km.